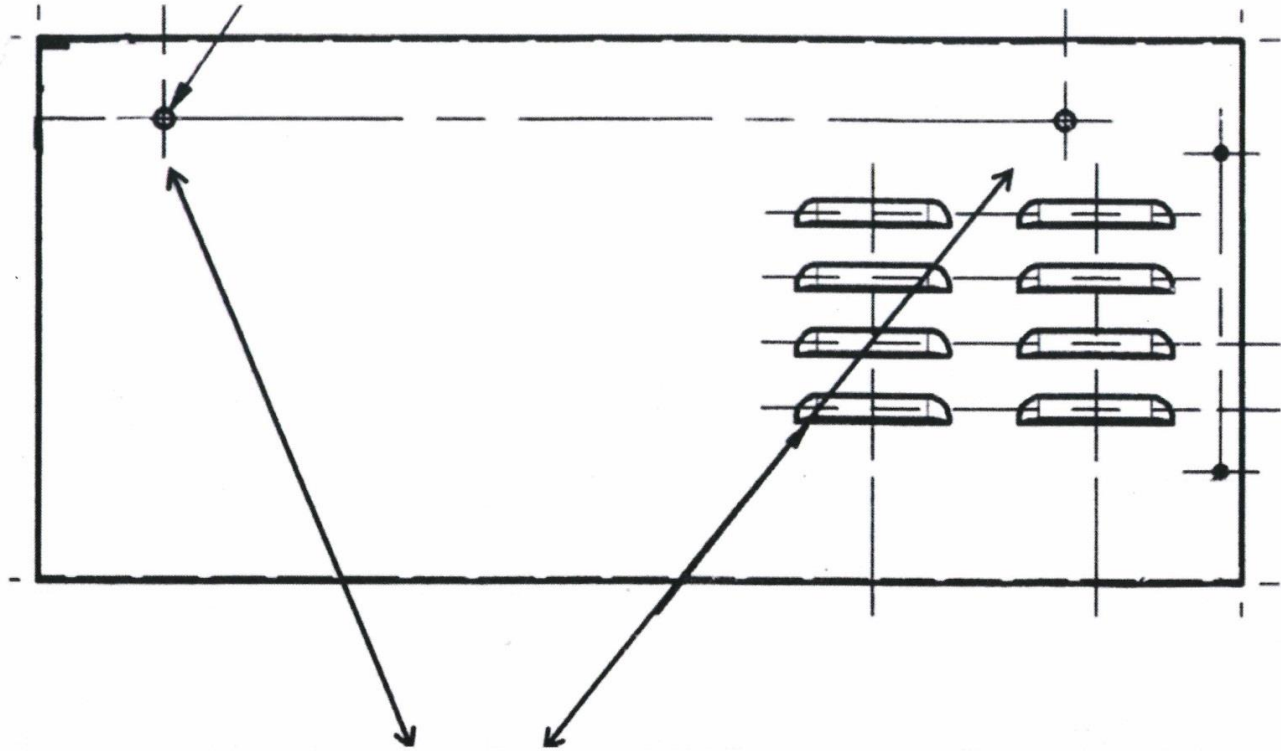


Under Counter Mounting Instructions



To install under counter remove the four (4) cap screws from both holes on each side of the unit illustrated above. Using the supplied L brackets (4) and socket cap screws (4), attach brackets to the side of the unit using the same holes (where the cap screws were removed) and attach the brackets with the supplied socket cap screws.

Note: For proper ventilation, make sure there is a minimum of two (2) inches of space between the back and sides of the refrigerator and wall.

Tape the supplied mounting template to the underside of the counter centered in the desired location for the refrigerator. Mark the four (4) holes on the template and using 23/64" bit, drill four (4) holes. Screw the supplied (4) anchor inserts into each hole until flush with the under counter surface. Raise and support the refrigerator into place aligning the holes of the L brackets with the anchor inserts use the four (4) supplied hex bolts into the inserts